

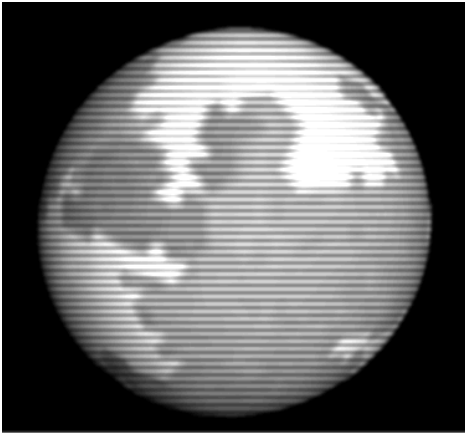


GALCOP SECURITY – SYSTEM PROFILES

The information contained herein is rated as RESTRICTED and is not to be made available to those without the necessary security clearance.

INTRODUCTION

Over the past year, the GalCop Interstellar Intelligence Service (GIIS) has been monitoring the development of a number of dictatorial regimes that have established themselves within the galaxy. These systems, many of which were once model democracies, have through a range of circumstances succumbed to autocratic governments which, in the opinion of GIIS, represent a significant threat to the economy and security of neighbouring systems. Diplomatic relations with these dictatorships are generally weak, and therefore detailed information the policies and aspirations of the governments in question are not widely available. However, GIIS has carried out an intensive monitoring programme involving signals intelligence, electronic surveillance and personal interviews with exiled individuals, in order to construct accurate profiles of the systems under investigation.

System Profile: ISRIVEEN

LOCATION: (5: 186, 199)

GOVERNMENT: Military Dictatorship

POPULATION: 2.7bn (Human Colonials)

ECONOMY: Poor Agricultural

PRODUCTIVITY: 4536 M Cr

TECH LEVEL: 5

Politics:

Isriveen is governed by a military dictatorship that took power in bloodless coup shortly after the system's initial colonisation. Over the years, the government, known as the People's Revolutionary Junta, has brutally suppressed a number of pro-democracy movements, and while limited elections are occasionally held in response to demands from neighbouring systems, the regime has consistently refused to recognise their results; the claim being that major constitutional change is required before any power can be transferred away from the military.

Despite the government's actions, pro-democracy groups such as the National Democratic League continue in their opposition to the dictatorship, and there are many émigré organisations active in nearby systems. Those dissidents remaining within the Junta's sphere of influence are frequently targeted for arrest or intimidation by government security and intelligence forces.

Economy:

Isriveen possesses substantial agricultural resources, with a range of indigenous plant and animal species being farmed in locations throughout the system. However, the lack of industrialisation has prevented the full benefits of these resources being realised, and as a result the system's overall economic productivity is considered poor. In attempting to offset these deficiencies the government has resorted to the widespread cultivation of narcotics, the crops of which are comparatively easy to grow yet fetch a large price on the international markets. While GalCop condemns the sale of illicit drugs, a significant proportion of Isriveen's exports are comprised of legal medical supplies, and this represents a major point of leverage in Isriveen's diplomatic relations with its neighbours.

Isriveen's economy is rife with corruption at all levels, resulting in high taxation and significant financial hardship for the working populace. By necessity a large proportion

of the system's income is invested in the military, with a considerable amount being spent securing imports of machinery and computers from industrialised neighbours.

Judiciary:

Isriveen's state legal system is based around the court martial, with judges, juries and presiding officers all being representatives of the military. While the death penalty is sanctioned for serious offences, detention is the most common form of punishment, with the prison population providing much of the work force for the system's remote asteroid farms.

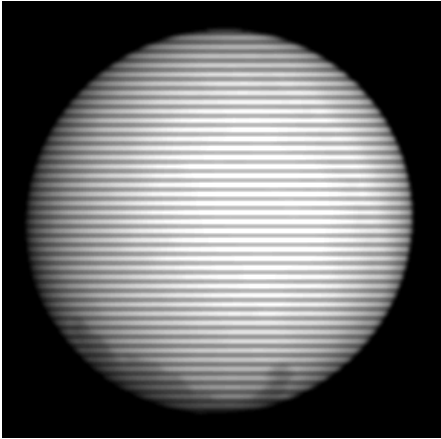
The government maintains a regular state police force, the Revolutionary Guard, however the extensive corruption within its ranks has rendered it largely ineffective, with all but the most serious offences passing unchecked. The political police, on the other hand, are a formidable foe, acting as a special branch operating on the direct orders of the military government. These units, known as the Enforcers, are tasked with seeking out political criminals at home and abroad, administering justice on behalf of the regime.

Isriveen's relations with its neighbours:

While Isriveen has readily entered into trade agreements with like-minded neighbours, it has shunned official contact with more politically stable systems, which publicly condemn the government and its actions. The flow of narcotics and political refugees into nearby systems has forced GalCop to step up routine patrols along interspace borders, and there has been a significant increase in the number of arrests relating to drug smuggling and people trafficking. Even those neighbours who maintain close trade relationships with Isriveen are showing frustration at the lack of political and economic reform necessary to increase the system's productivity. While some systems criticise the Junta in public, others are believed to be secretly supporting dissident organisations within Isriveen itself.

Isriveen's relations with GalCop:

Current relations between GalCop and Isriveen are poor. GalCop is bringing pressure to bear on the Isriveen regime to improve the human rights situation and to enter into greater dialogue with the system's democratic leaders. GalCop does not encourage trade, investment or tourism with Isriveen and provides no security or financial support for any trade promotion by GalCop members and associates.

System Profile: ESVERARA

LOCATION (5: 116, 24)

GOVERNMENT: Dictatorship

POPULATION: 4.0bn (Human Colonials)

ECONOMY: Rich Industrial

PRODUCTIVITY: 22400 M Cr

TECH LEVEL: 10

Politics:

Esverara is governed by a neo-Roman dictatorship with an Emperor as its figurehead, supported by an Imperial Senate. Society is based heavily around personal patronage: the military high command is comprised of four pro-consuls each personally appointed by the Emperor and responsible in turn for the army, navy, astromarines and intelligence corps. Similarly, most of the senior Senatorial appointments are also within the personal gift of the Emperor.

While Esverara is by all standards an absolute dictatorship, political competition amongst the middle and lower classes is encouraged: a series of convoluted measures are in place to prevent those outside the patrician class from ever challenging the authority of the leadership. This gives the general population a significant amount of apparent personal freedom, and most are content simply to maintain their position in society. Only in times of great crisis does public support for the Emperor diminish, and where one leader falls, another is swiftly found amongst the patrician classes to take their place. However, this apparently seamless transition can be extremely brutal: reprisals against political opponents are common, with proscription lists a familiar sight, and it is not unusual for a deposed dictator's entire entourage to face exile or prosecution by an incoming government. While this provides a great source of entertainment for the proletariat classes, it makes for an inherently unstable political landscape and so despite its wealth and technical capabilities, Esverara has often found it difficult to secure long-term trade agreements with its neighbours, forcing it to become almost completely self-sufficient.

Economy:

Esverara has a highly industrialised, high-tech economy and is a major exporter of manufactured goods such as computers and machinery. The government maintains large off-world astrofactories where the majority of its heavy manufacturing activity is carried

out; a fleet of freighters and tankers is employed to ferry raw materials and finished products between the factories and the main space stations.

A major point of dispute between GalCop and Esverara is the dictatorship's use of slavery. The government grants slaves a special status by which they may be legally owned so long as they are properly registered and worked according to specific regulations. In fact, Esverara's extensive use of machinery and robotics means that its slaves are more likely to be employed as factory managers, accountants and personal assistants than as a source of manual labour, and as a result they have become a highly-valued commodity. While these circumstances may bear little relation to those encountered by slaves and prisoners in the agricultural dictatorships or the communist gulags, GalCop remains defiant in its aim to eradicate state-sponsored slavery in all civilised systems. It should be noted that any trade of slaves through GalCop-controlled spaceports within Esverara remains illegal and offenders are liable to be fined or prosecuted.

Judiciary:

The Esveraran constitution contains a complex code of laws; however there is no state prosecution service and so all legal action is progressed privately by the individuals involved. In addition there is no state prison service, and although the law sanctions the death penalty for many offences, in practice the imposition of a fine or forced exile are the most common punishments. Any executions or other forms of corporal punishment are carried out by the army under the direction of the Lictors, a group of civil servants who also act as a bodyguard to senior magistrates.

Away from private prosecutions, the state's main concern is the maintenance of public order and the organisation of state finances. These are the responsibility of the Quaestors, which form the main policing unit within the Imperial dictatorship. At a more senior level are the Censors: these are high-ranking members of the Senate with responsibility for overseeing public morality. Typically they are dispatched on the direct order of the Emperor or the pro-consuls to seek out corruption and misconduct in office, often accompanied by an escort of Lictors ready to carry out immediate punishment once guilt has been ascertained.

Esverara's relations with its neighbours:

Esverara's prolific productivity and technical expertise makes it an attractive trade partner to neighbouring systems, despite the political instability caused by its form of government. However, weaker neighbours have often found themselves threatened by the dictatorship, with some claiming that they have been forced to pay tribute or else face the prospect of military action by Esverara's elite corps of astromarines.

Esverara's relations with GalCop:

Current relations between GalCop and Esverara are fair. The contentious issue of slavery is still under discussion and GalCop has voiced its concerns over Esverara's growing intimidation of its weaker neighbours. While the Imperial security forces are extremely protective of its own people, the state has little interest in the safety and rights of non-citizens living and working within Esveraran society. GalCop therefore retains a significant presence in Esverara to provide safe passage to visitors as well as assisting with trade negotiations.

Information compiled by Maj. J. Ramirez, GIIS